



As a property that is part of our towns Historic Districts and Historic Properties, this restored home is a step into the Interesting and historic past of Harwinton. According to our town land records, Samuel Peck purchased the land and built this 4-room house in 1754.

The farmhouse that Bree and Alex Gurin have restored sits along County Line Road.

This 250-year-old home, along with its restoration story, was featured in the October issue of Early American Life magazine.

Through to the determination of the Gurins, not only was the farm house completely restored, they are the first house that has been included as a part of the Harwinton Historic Districts and Historic Properties that does not lie in either of our Historic Districts.

We are proud to share a small portion of their story with you and congratulate the Gurins for their successful preservation of a special place in the hearts of all who live in Harwinton.

If you would like to tour this wonderful home, please contact the Gurins at 485-1154 or email them at [samuelpeckhouse@yahoo.com](mailto:samuelpeckhouse@yahoo.com).



December 1997

The Gurin's moved into the house in 1997, before the restoration project began. Many parts of the house were worked on simultaneously and the task of living amidst the chaos was nearly unbearable. They virtually lived in one room at a time and the old oil heater was running at full capacity because everything was open.

April 1998

The restoration project took only 6 months to complete but included major renovations.



The ell, added in 1810, had no foundation, Floor joists, and plates and beams had rotted and needed replacing. Beetle infestation had chewed the main carrying beam almost into powder.



The house was jacked up and excavation was performed to add crushed rock below the foundation level.

Concrete footings were poured and a cinder block foundation added under the 1810 ell.



This section of the house, originally a woodshed, does now accommodate some 21<sup>st</sup> century amenities with a computer office and an exercise room

Today, the house has five functioning fireplaces, three of which operate off their main center stack, to heat its four original rooms, master bedroom, keeping room, “best room”, boring room and a pantry converted into a bathroom. Most of the house retains its original chestnut flooring, hardware, and windows. Even the kitchen shelves are original.

Each room displays a blend of late eighteenth century antiques and reproductions – a tasteful assortment of ladder-back and Windsor chairs, rope beds, scrub-top tables, Shaker boxes, pottery, redware and pewter.



An 18<sup>th</sup> century copper bed warmer and a reproduction copper kettle front the master bedroom fireplace. The reproduction tin candle box protects its valuable contents from rodents. To the right of the hearth is a 1820 candle mold with pewter tubes and funnel. Through the doorway to the right of the cupboards is the main entrance. The barrel stores dry goods in this unheated area, which is closed off during the winter. The front batten door, with strap hinges, is a reproduction by the restoration contractor.

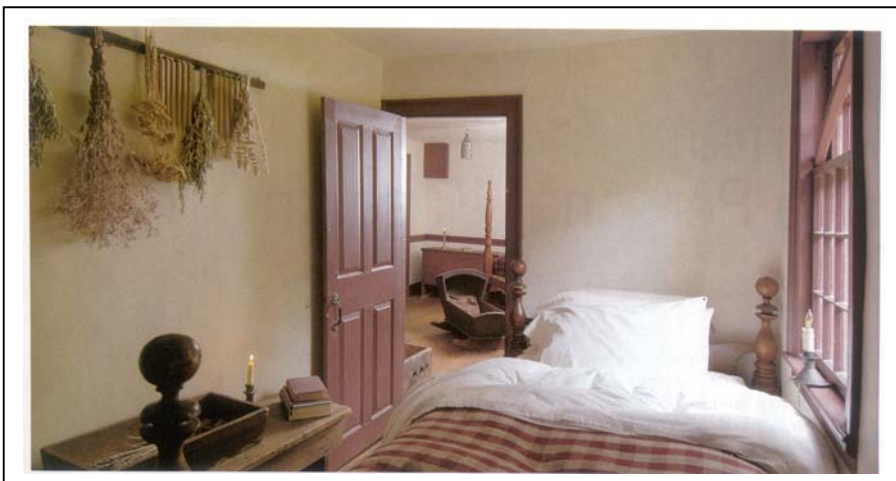
Three of its five fireplaces connect to the center chimney. The windows and much of the clapboards on the main house are original. The ell was added about 1810.



A circa 1820 scrub-top worktable of birch and pine, from New Hampshire, retains its original single leaf and remnants of red paint on the base. Behind the small trencher with fruit is a butter mold. Note the large 18<sup>th</sup> century motor and pestle (on the mantel) for grinding herbs. A recessed cabinet is above the fireplace. The large trencher at the rear rests on a reproduction cupboard from the New England Historical Connection. The shelf is original to the house.



Jan Hoffman-Woodward crafted the copper lined sink. It has an old-fashioned brass faucet connected to a newly drilled deep well, but the hand pump at right can draw water from the original, shallow hand dug well. The large red platter on the shelf is from Old Sturbridge Village. All the shelving in the kitchen is original. The string hanging from the shelf is used to dry dishtowels.



The cozy boring room, measuring 6' x 9', has an early 19<sup>th</sup> century cannonball rope bed. An un-painted, square-nail bench of the same era serves as a night table and holds an apple-sorting box and antique books. Dried herbs decorate the wall. In the adjacent master bedroom, high on the wall, is an original paneled cupboard.



A Connecticut tall-post cherry field bed with original red stain and rails, circa 1780, anchors the master bedroom. A trundle bed lies beneath it, with an 18<sup>th</sup> century cradle at the foot. Against the back wall is a popular Chippendale linen press from Connecticut circa 1785, with molded tombstone doors and rope-molded base. The tin lantern is a reproduction. The door at the right opens to the best room.

“This house allows you to let your imagination go, to think in a different way, and transport yourself to a different time and place,” says Alex Gurin. “If you think of the number of people who have lived here, that gave birth to their children in the boring room.... there are so many human souls contained in this environment, for us, its not just a house.”

